



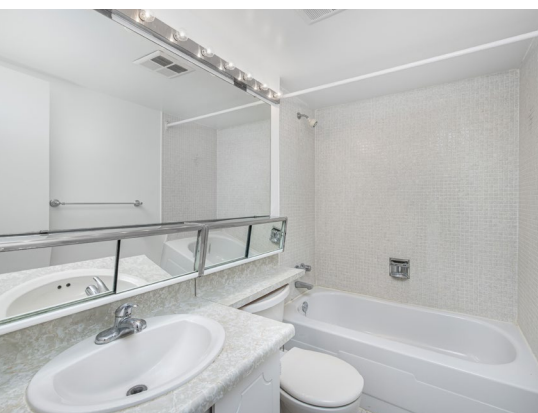
1201 STEELLES AVENUE W, SUITE 503

503-1201SteelesAveW.com



1201 Steeles Will Steal Your Heart

2 + 1 BEDROOMS
2 BATHROOMS
2 PARKING SPACES



MAY WE INTRODUCE YOU TO 1201 STEELES

A beautiful, spacious condo filled with light, storage and plenty of room to live. This 1,216 square foot corner suite is filled with sunshine from all angles. High above the tree canopy of well-established neighbourhood trees, large windows throughout provide excellent views at every turn. With a west-facing covered sunroom and open-air balcony, you can relax in the sunshine all year round.

2+1+2+2 = CONDO CONVENIENCE LIKE NO OTHER

With 2+1 bedrooms, 2 bathrooms and 2 parking spots, this condo is ideal for just about anyone looking for a place to nest. Two excellent sized bedrooms plus an extra room for a guest bed, an office, a hobby room or even a yoga space, this Condo floor plan is laid out for comfortable living in mind. Hosting family or guests from out of town is never stressful here. The primary bedroom with its spacious double closets also has its own ensuite three-piece bath as well as sunny panoramic views of the tree-lined neighbourhood below. The second bedroom has been integrated into the main living space but can easily be returned to a private bedroom.

A LIVING SPACE DESIGNED FOR SHARING

An ideal location for empty nesters looking to downsize, but still host family get-togethers. An ensuite storage locker ensures ample space to store seasonal decorations, housewares and larger items seldom used. There's no heading down to the parking garage for a storage locker here. Speaking of storage, this entire suite has plenty of nooks, cupboards and closets for pantry, linens, winter clothes, hobby materials etc. Easily design a minimalist space without having to actually be a minimalist.

503-1201SteelesAveW.com



THE DETAILS

Possession Date: TBD

Property Taxes: \$1,801.02 / 2023

Neighbourhood: C07 – Westminster Branson

Year Built: 1974

Size: 1,216 square feet + 69 square foot balcony

Type: Condominium

Style: Apartment

Parking: 2 parking spots



Visit us @ getnested.ca



PAVLENA BROWN

Managing Partner at Nested
Sales Representative

416.909.1602
pavlena@getnested.ca



KATHY ESSERY

Managing Partner at Nested
Sales Representative

647.927.6812
kathy@getnested.ca

SAGE REAL ESTATE LTD., BROKERAGE / 639 Annette Street – In the ♥ of Bloor West Village

SAGE

Information and statements contained herein are from sources deemed to be reliable and assumed to be correct but no warranty or representations are made as to the accuracy thereof and same is subject to errors or omissions. This feature sheet is not intended to solicit Sellers or Buyers currently under contract with another brokerage. Designed and printed by Sage Real Estate. SageRealEstate.ca